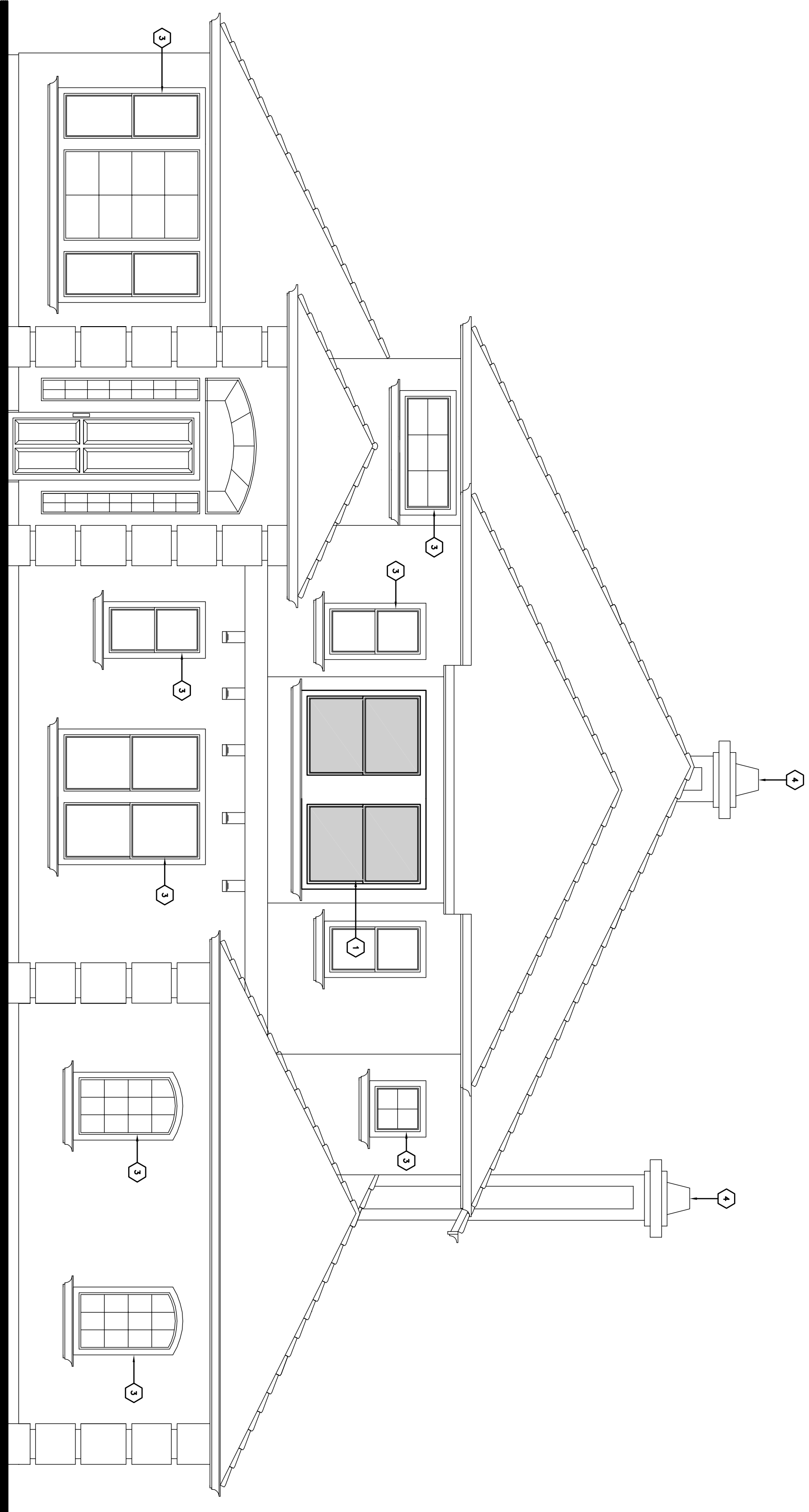
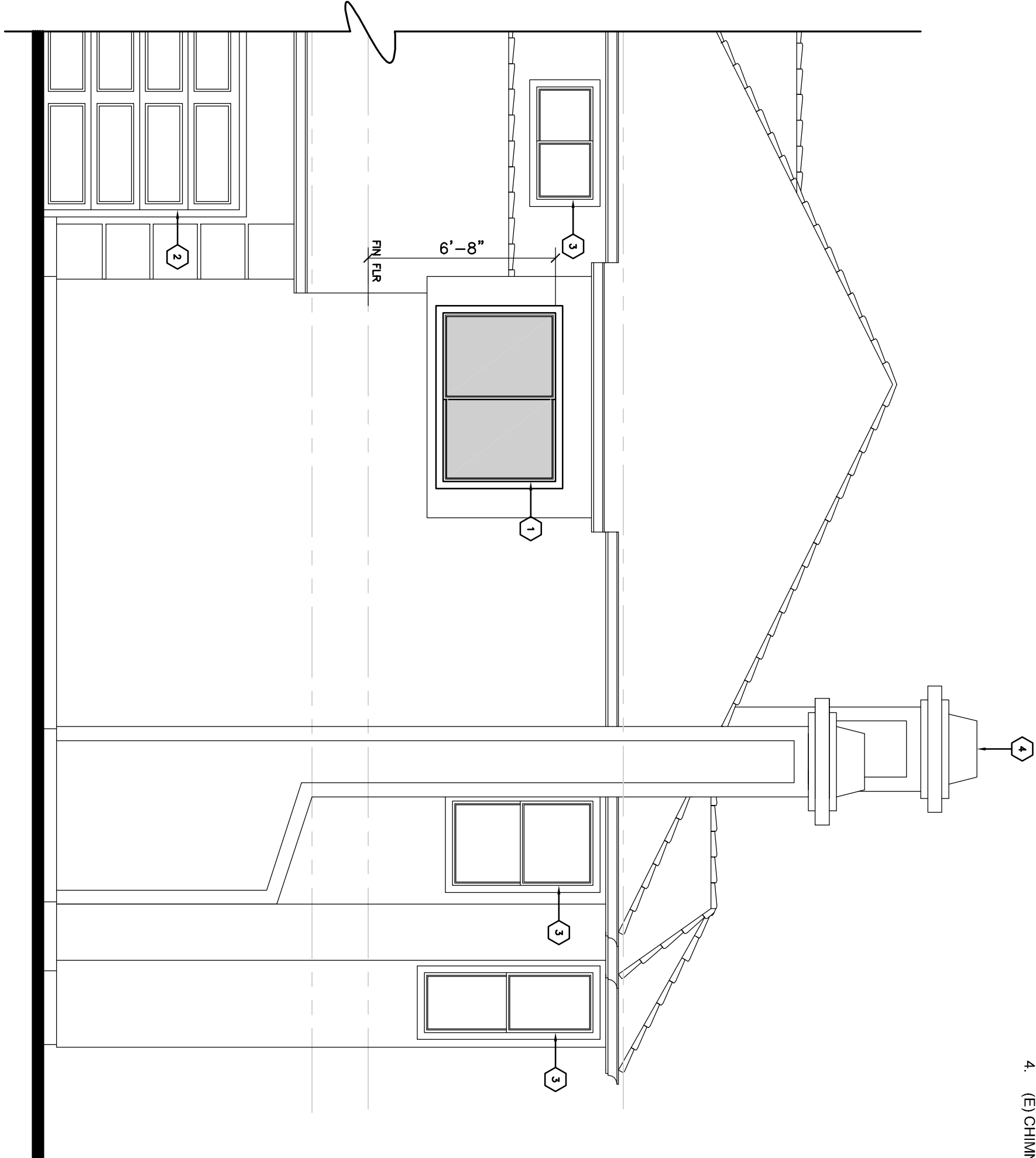
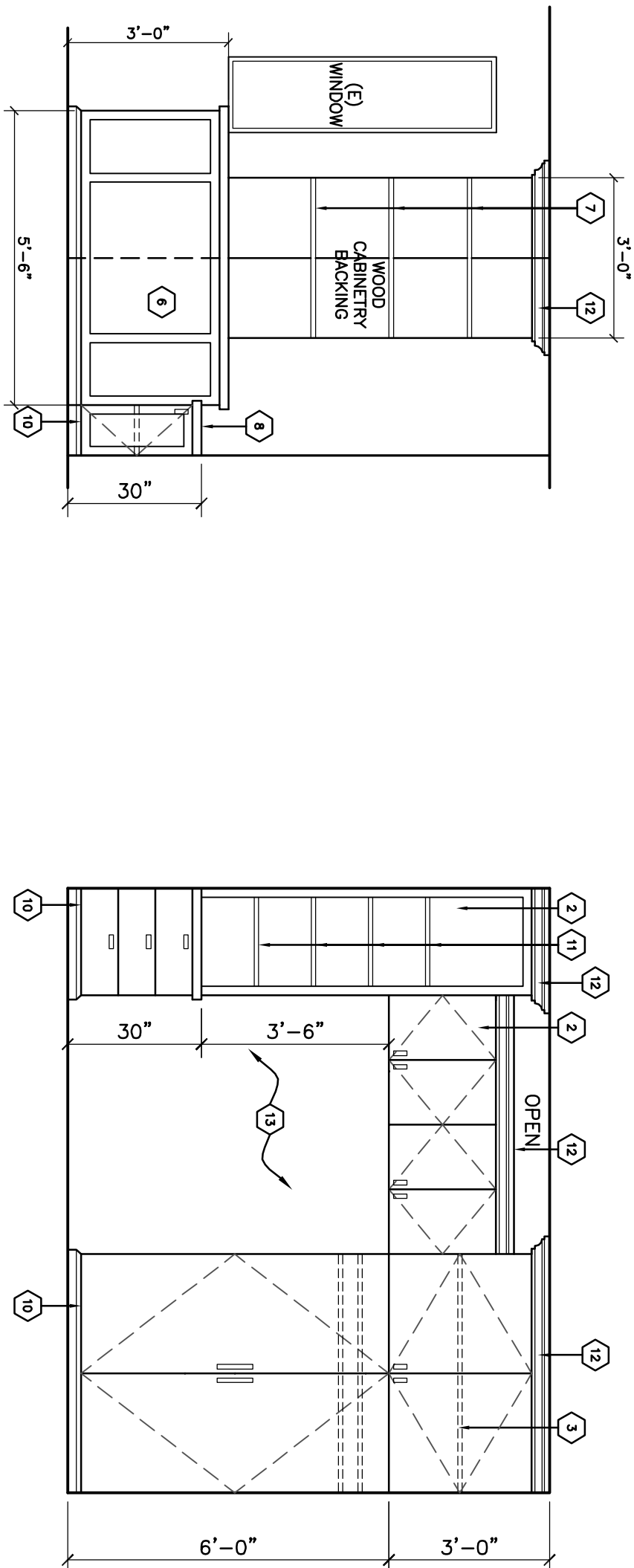


- EXTERIOR ELEVATION KEY NOTES**
1. (N) WINDOW WITH TRIM TO MATCH (E) RESIDENCE-SEE WINDOW SCHEDULE FOR SIZES
  2. (E) WINDOW TO REMAIN
  3. (E) WINDOW TO REMAIN
  4. (E) CHIMNEY TO REMAIN



**EXTERIOR ELEVATIONS**

SCALE: 1/4"=1'-0"



**2. BEDROOM 4**

**1. BEDROOM 3**

**INTERIOR ELEVATIONS**

SCALE: 3/8"=1'-0"

**FLOOR PLAN KEY NOTES**

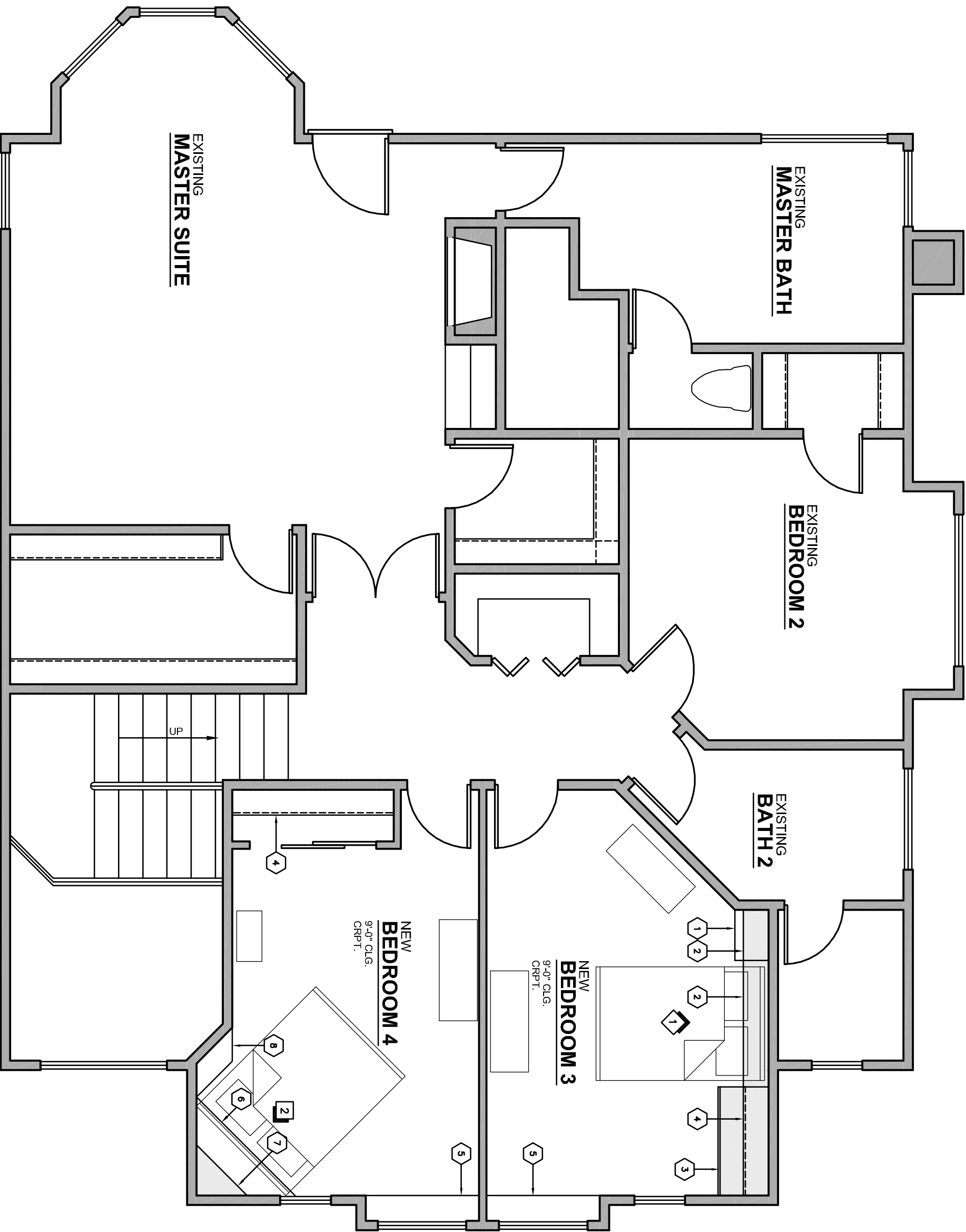
**CABINETS**  
CONTRACTOR TO CONFIRM ALL CABINET STYLES, FINISHES, COUNTER TOP MATERIALS AND SHELVING DESIGN WITH OWNER PRIOR TO INSTALLATION. SEE INTERIOR ELEVATIONS FOR HEIGHT OF ALL CABINETS.

1. 18" DEEP COUNTERTOP WITH CABINET BELOW
2. 12" DEEP UPPER CABINET
3. 24" FULL HEIGHT CABINETRY
4. 4" WOOD CARPENTERED LEDGE
5. (E) WOOD CARPENTERED LEDGE
6. CORNER CABINETRY 1/2 WALL WITH SHELF AT 48" PFF FINISH
7. FLOOR JOINS TOGETHER WITH NEW WINDOW SILL, NEW CABINET FACING ACROSS AS HEADBOARD FOR QUEEN SIZE BED (SEE FLOOR PLAN AND INTERIOR ELEVATION FOR SIZE AND DESIGN)
8. CORNER DISPLAY SHELVES (SEE FLOOR PLAN AND INTERIOR ELEVATION FOR SIZE AND DESIGN)
9. 1/2" TRAPEZOIDAL NIGHT STAND

**ARCHITECTURAL FEATURES**

CONTRACTOR TO CONFIRM ALL PRODUCT SELECTION AND FINISH MATERIALS WITH OWNER PRIOR TO INSTALLATION.

10. BASE MOLDLING
11. ADJUSTABLE SHELVING
12. CROWN MOLDLING
13. OPEN SPACE FOR BED

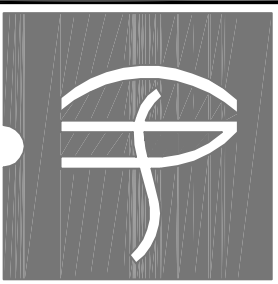


**REVISED SECOND FLOOR PLAN - ARCHITECTURAL**

SCALE: 1/4"=1'-0"

REVISIONS	BY

**SILVA RESIDENCE**  
INTERIOR REMODEL  
4508 PEBBLE BEACH  
STOCKTON, CALIFORNIA 95219



CHRIS SCHARRAPL  
CORPORATION  
3300 Deep Park Dr. Suite E  
Stockton, CA 95218  
Phone: 209.966.2664  
Fax: 209.966.2664  
CSCHARRAPL@GMAIL.COM

DATE:	22 MAY 13
SCALE:	AS NOTED
DRAWN:	MC
JOB:	1280-12

**REVISED SECOND FLOOR PLAN - ARCH**  
**INTERIOR ELEVATIONS**  
**EXTERIOR ELEVATIONS**